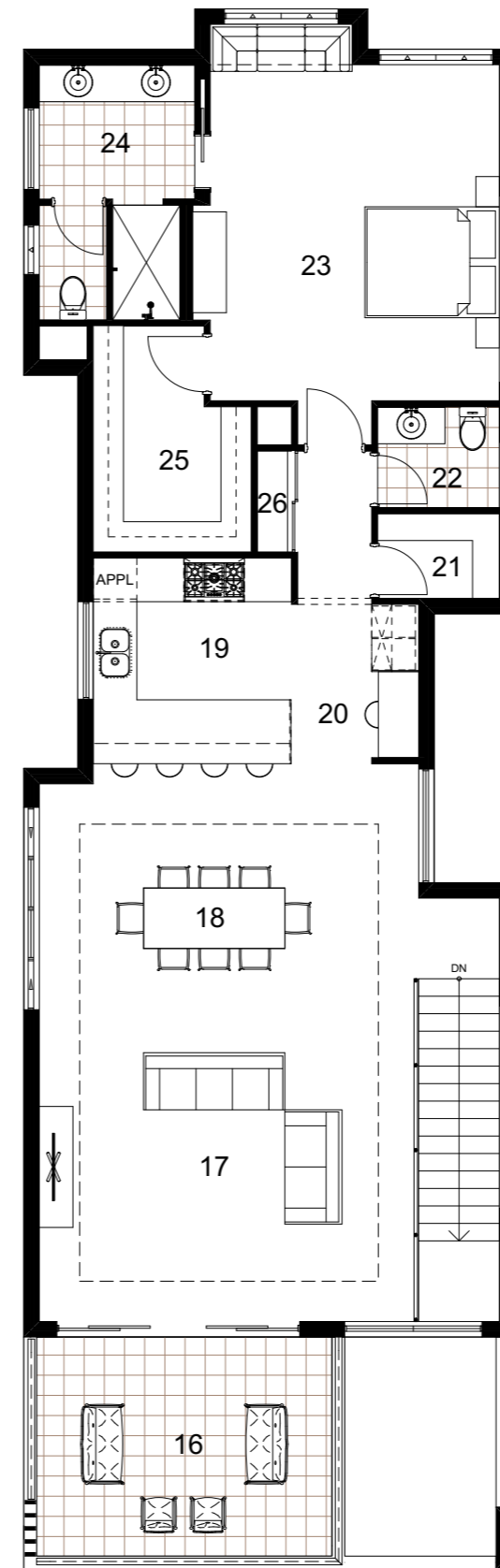


GROUND FLOOR PLAN



UPPER FLOOR PLAN

- 1 Porch
  - 2 Entry Hall
  - 3 Garage
  - 4 Laundry
  - 5 Linen
  - 6 Boot Room
  - 7 Cellar / Store
  - 8 Den
  - 9 Kitchenette
  - 10 Lounge
  - 11 Alfresco
  - 12 Bedrooms
  - 13 Robes
  - 14 Bathroom
  - 15 WC
  - 16 Balcony
  - 17 Living
  - 18 Dining
  - 19 Kitchen
  - 20 E-nook
  - 21 WIP
  - 22 Powder
  - 23 Master Suite
  - 24 Ensuite
  - 25 Walk in robe
  - 26 Linen
- Area 326 m<sup>2</sup>

*Contemporary  
Retrospective*

MID-CENTURY MODERN

STYLES BY OSWALD

*The Mesquite*

© OSWALD HOMES