



# Dreaming of an island in the sun

**MICHAEL ROBERTS**

Just like the resort-styled homes that populate the islands off the coast of North Queensland, Oswald Homes' Whitsunday is not just an inspired design – it is a paradise.

While very much at home near the water in Applecross, the custom display transports visitors to the

balmy islands from which it derives its name, bringing together all the features one might expect from a luxury home in the tropics.

"Casual, comfortable and happily unpretentious, the Whitsunday combines the grace of plantation homes with the laid-back allure of luxurious hideaways in Hawaii and the Caribbean," Oswald Homes Principal Designer Brook Leber told *New Homes*.

"The focus is on natural muted colours that soften bright light and work harmoniously with the inky blacks, cool whites and gentle green accents that typify the tranquil interiors of a coastal house."

Mr Leber said the interior design served to further enhance the home's island credentials.

"Furniture is oversized, materials

include cane, rattan, bamboo and seagrass and fabrics feature patterns showing tribal nuances, animal prints, cool botanics, natural history designs, palm trees and banana leaf motifs," he said.

"Lush foliage provides an explosion of colour against whitewashed walls, timber window frames and coloured storm shutters, while deep wraparound verandahs extend living spaces outside and invite

you to sit back, put your feet up and unwind."

With a vision to create a warm and inviting family home with a feeling of relaxed elegance, the Whitsunday has 650sqm of living space spread across two levels.

An opulent master suite is located on the ground floor amongst an open-plan lounge, living, kitchen and dining area, while three generous bedrooms on the second level afford everyone maximum privacy and space.

"Key living spaces in this home are open-plan, free-flowing and family-friendly, while deep eave overhangs and verandahs provide welcome shade to help keep interiors cool and comfortable," Mr Leber said.

"Future options have also been considered, with a double garage off the rear laneway featuring a separate powder room which could form a pool house or possible ancillary accommodation."

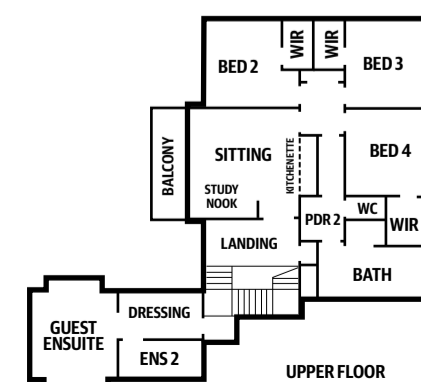
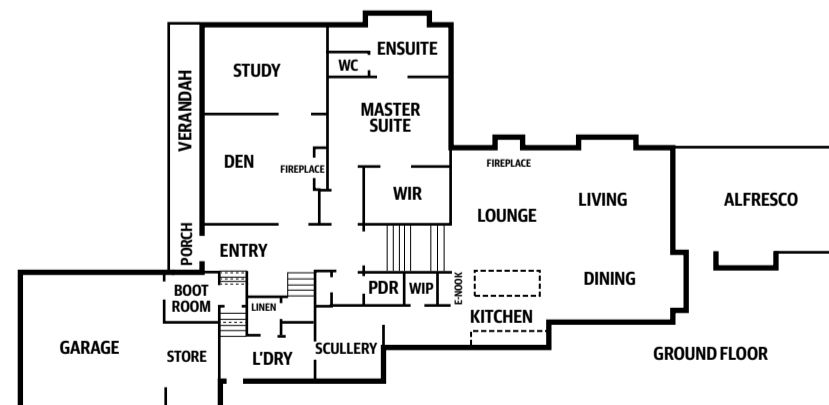
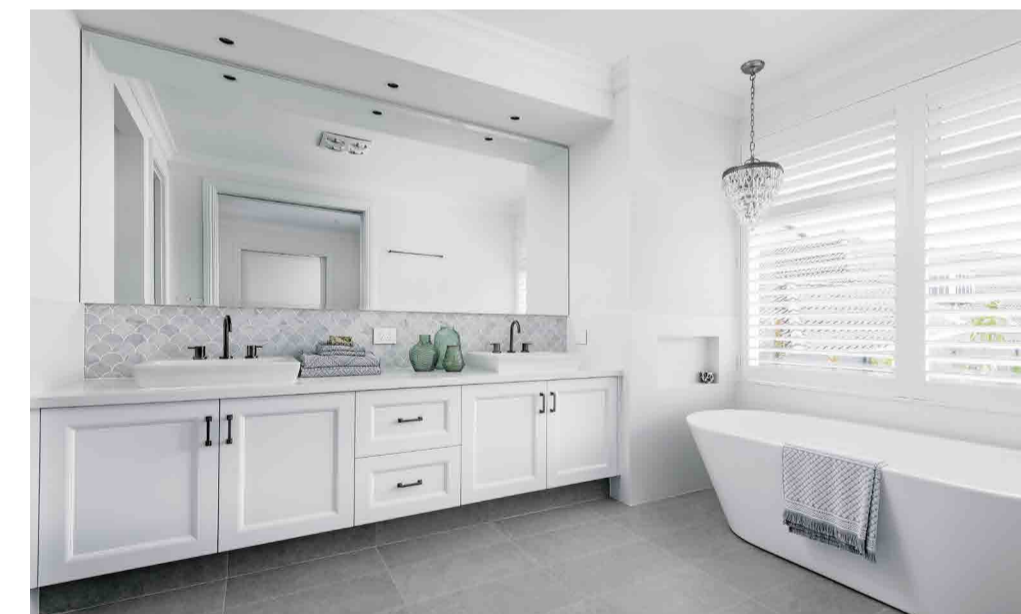
Visiting friends and family are in for a treat, with a guest ensuite ensuring a more-than-comfortable stay, while a mesmerising outdoor alfresco and dazzling pool area is the perfect spot to enjoy summer barbecues and festive celebrations in style.

Not your average four-by-two home built on a rectangular block, Mr Leber said the Whitsunday's distinctive design had to accommodate some unusual topography.

"The architectural style is a unique adaptation for our suburbs and, whilst the home appears to be built on a standard-sized property, the block is actually 80m long, tapers from 24m to 8m and slopes over 4.5m," he said.

"Given the sloping and narrow nature of the home, the brief was to combine indoor and outdoor spaces whilst maximising northern light and separating the various sleeping and living zones."

The Whitsunday is located at 19 Fraser Road, Applecross and is open for viewing on Saturdays and Sundays from 1-4pm.



## WHITSUNDAY

5 5

ADDRESS 19 Fraser Road, Applecross

PRICE From \$724,593

BUILDER Oswald Homes

CONTACT 1300 217 663

www.oswaldhomes.com.au

