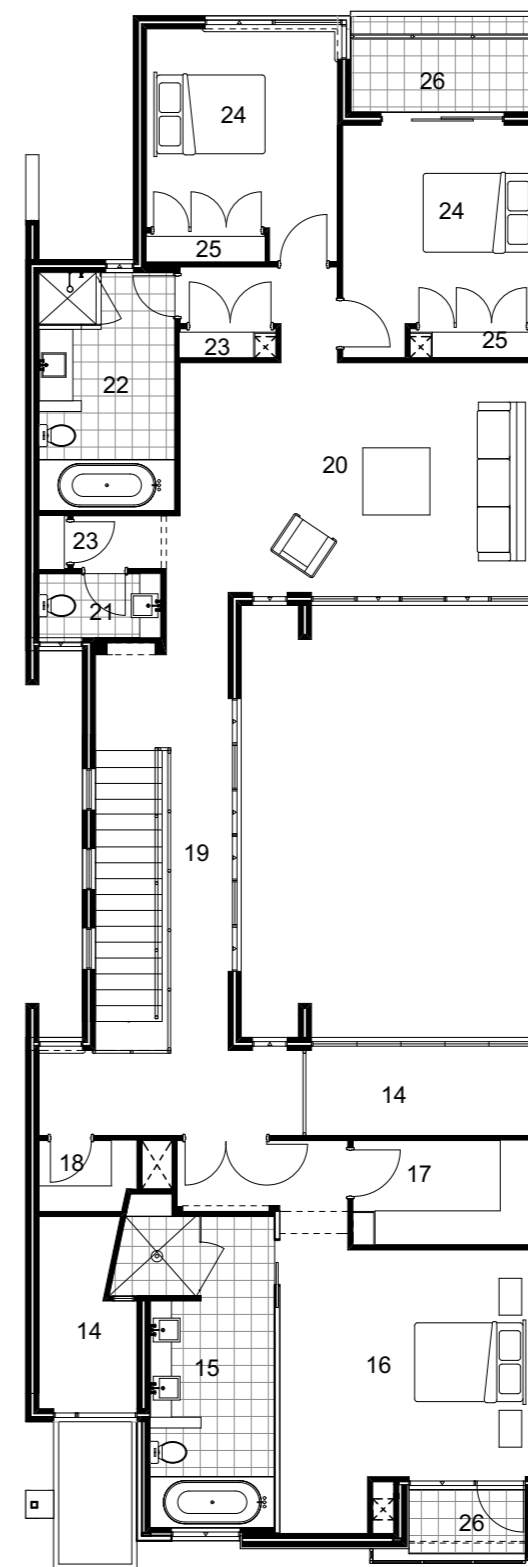


GROUND FLOOR PLAN

- 1 Porch
 - 2 Entry
 - 3 Powder 2
 - 4 Guest Bed
 - 5 Living
 - 6 Fire Place
 - 7 Courtyard
 - 8 Kitchen
 - 9 Dining
 - 10 Pantry
 - 11 Laundry
 - 12 Garage/ Store
 - 13 Drying Court
 - 14 Void
 - 15 Ensuite
 - 16 Master Suite
 - 17 Walk In Robe
 - 18 Store
 - 19 Passage
 - 20 Lounge
 - 21 P'dr 1
 - 22 Bath
 - 23 Linen
 - 24 Bed
 - 25 Robe
 - 26 Balcony
- Area 422 m²



UPPER FLOOR PLAN