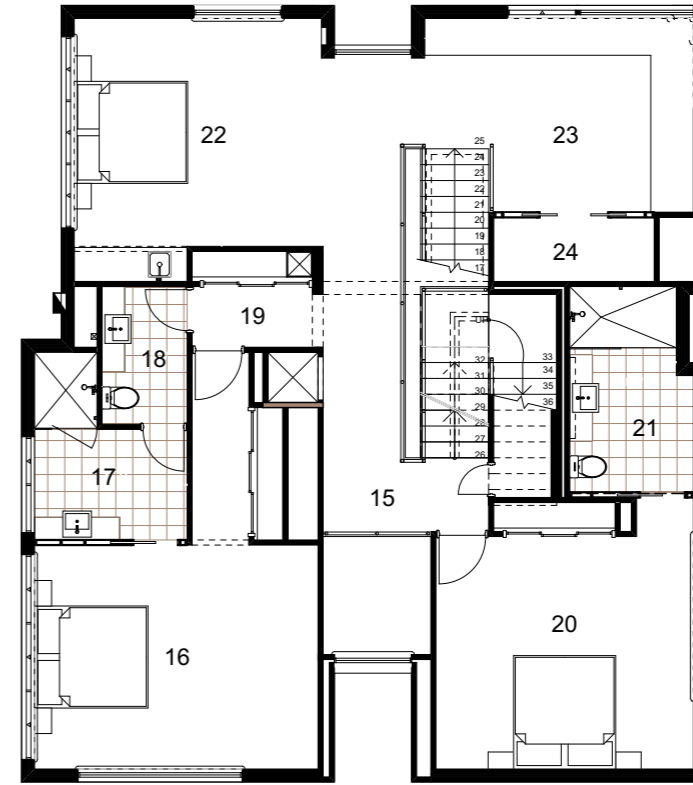
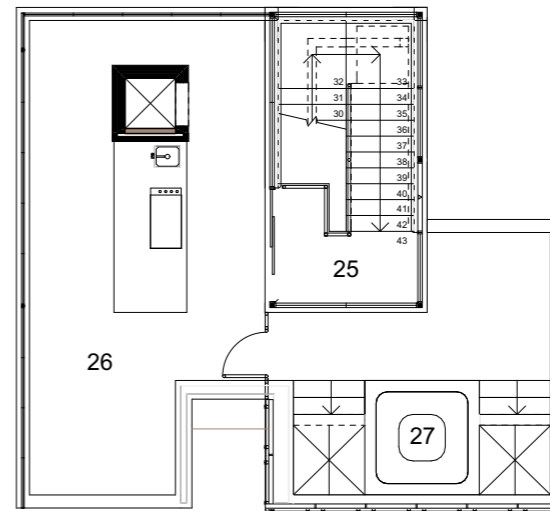


GROUND FLOOR PLAN

- 1 Porch
 - 2 Entry
 - 3 Garage
 - 4 Master Suite
 - 5 Dressing
 - 6 Ensuite
 - 7 Laundry
 - 8 Powder 1
 - 9 Drying Court
 - 10 Kitchen
 - 11 Living
 - 12 Dining
 - 13 Alfresco
 - 14 Pool
 - 15 Landing
 - 16 Bed 2
 - 17 Ensuite 2
 - 18 Powder 2
 - 19 Linen
 - 20 Bed 3
 - 21 Ensuite 3
 - 22 Sitting
 - 23 Study
 - 24 Store
 - 25 Landing
 - 26 Terrace
 - 27 Spa
- Area 494 m²



FIRST FLOOR PLAN



SECOND FLOOR PLAN