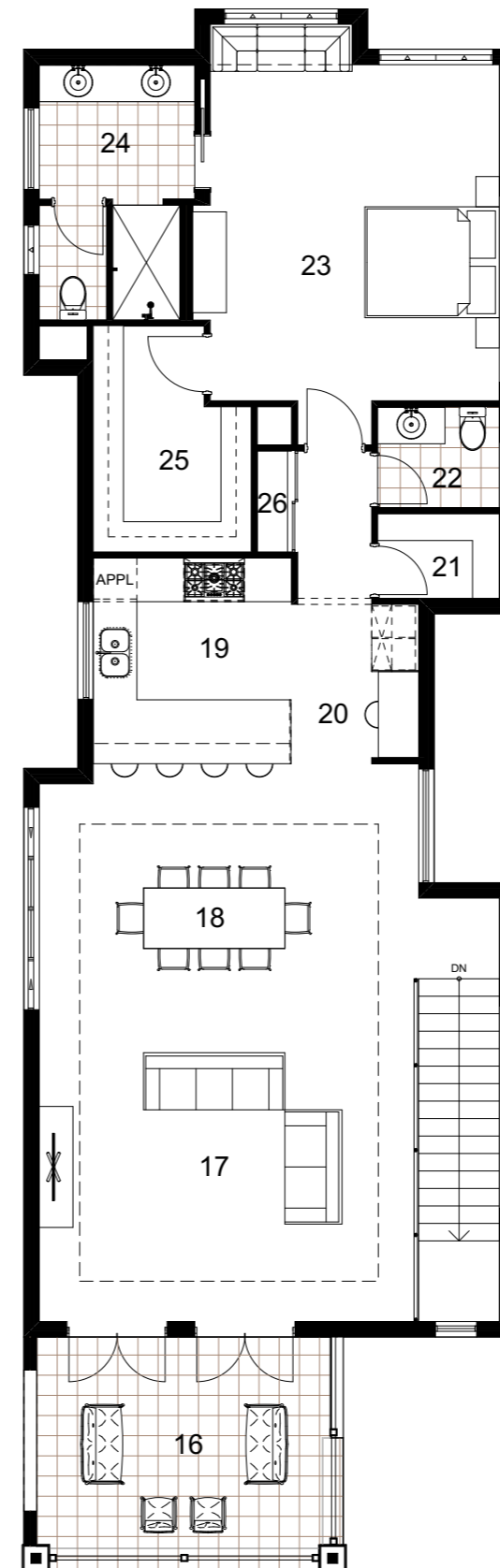


GROUND FLOOR PLAN



UPPER FLOOR PLAN

- 1 Porch
- 2 Entry Hall
- 3 Garage
- 4 Laundry
- 5 Linen
- 6 Boot Room
- 7 Cellar / Store
- 8 Den
- 9 Kitchenette
- 10 Lounge
- 11 Alfresco
- 12 Bedrooms
- 13 Robes
- 14 Bathroom
- 15 WC
- 16 Balcony
- 17 Living
- 18 Dining
- 19 Kitchen
- 20 E-nook
- 21 WIP
- 22 Powder
- 23 Master Suite
- 24 Ensuite
- 25 Walk in robe
- 26 Linen

- Area 321 m²

*Barefoot
luxury*

COASTAL PLANTATION

STYLES BY OSWALD

The Mokapu Bay

© OSWALD HOMES